

Elsafe Zenith Drawer Electronic Safes

Elsafe Zenith Drawer is the ideal electronic safe solution for hoteliers who want to maximize convenience for their guests and encourage use of the in-room safe. It provides superior design flexibility, allowing for placement inside drawers, cupboards... or anywhere in the room that it is most accessible and easy for guests to use.



FEATURES

- : Industry leading audit trail (500 events)
- : Flash memory
- : Reprogrammable configuration
- : ADA compliant telephone style keypad
- : 4-digit code
- : LED display for clear visible numbers
- : Green backlit keypad
- : Internal light
- : Push button to lock door
- : Powered with five (5) AA batteries
- : Low battery warning
- : Easy external battery change
- : Spring loaded door
- : Accommodates up to 17" laptop in certain models
- : Serviced by computerized service device with unique service code
- : Supports IR communication
- : Anti-tamper labyrinth
- : Internal carpet
- : Unique triangular locking bolt enforcement
- : Easy maintenance
- : 18 mm solid bolt locking mechanism

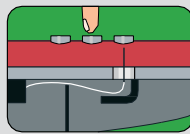
Optional features

- : Anti tamper switch
- : Wireless RF online communication upgrade (requires online network)
- : Rental mode by activation code
- : Power outlet inside the safe

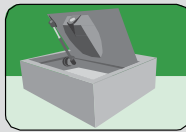
SPECIFICATIONS



anti-tamper labyrinths offer higher protection against manipulation.



the hydraulic door makes the operation of opening and closing the door smooth, and reduces the risk of hands and items getting caught in the door.



quick battery change without having to open the safe. simplifies maintenance, saving time and money.



Safelink

Elsafe SafeLink helps you set up and service your Zenith safe in seconds. With Zenith you can even print a detailed 500-event log from the safe memory.



PinKeyPLUS

Elsafe PinKey PLUS is a compact and powerful electronic PIN-code protected, non-resident master key to securely override Elsafe in-room safes. This allows for easy day-to-day safe operations.



Outlets

Optional internal power outlet available on the door (EURO, USA and UK).



*Measurements		Zenith 15	Zenith 17
Outside H/W/D Incl. keyboard	mm	131 / 400 / 350	131/460/350
	inches	5 ^{3/16} / 15 ^{3/4} / 13 ^{13/16}	5 ^{3/16} / 18 ^{1/8} / 13 ^{3/4}
Inside H/W/D	mm	62-123,5 / 397 / 347	62-124 / 457 / 347
	inches	2 ^{7/16} - 4 ^{7/8} / 15 ^{5/8} / 13	2 ^{7/16} - 4 ^{7/8} / 18 / 13 ^{11/16}
Door dimensions (h/w)	mm	292 / 382	442 / 292
	inches	11 ^{1/2} / 15 ^{1/16}	17 ^{3/8} / 11 ^{1/2}
Internal volume	liters	13,5	16,1
	cu ft	0,48	0,57
Weight	k	8,27	9,4
	g	18,23	20,72

H/W/D: Height/Width/Depth

	Standard Color	Color Option 2
Body color	Gray RAL 7015	Ivory RAL 101
Frame color	Gray	Ivory
Front	Gray	Ivory

: Override:
: Steel thickness:
: Fastening method:

SafeLink and PinKeyPLUS
Door: 2 mm / Body: 1,5 mm
Bottom: 4 holes / Security wire

Hinti GmbH
Seestrasse 34
CH-3800 Unterseen / Interlaken
T 033 821 65 60 F 033 821 65 62
E-mail: info@hintigmbh.ch
www.hintigmbh.ch

Hinti GmbH
Hotelsupplies